

# Water Meter Reading Worksheet

Recurring Work Order to Read Water Meters every 30 days  
Please use site map provided to identify location of water meters.  
Please use Water Meter Reading Tutorial if needed.

PROPERTY NAME: **San Marino Apartments**

Meter ID	Meter Number	Meter Type	Date	Time	Meter Reading
1	70562552	Domestic			
2	70562551	Landscape			

Meter Reading Completed By \_\_\_\_\_

When readings are completed please email this form to  
water@aelandscapedesign.com or fax to (909) 941-6876.

**LEGEND**



Water Meter



Backflow



Irrigation Controller



Fire Service

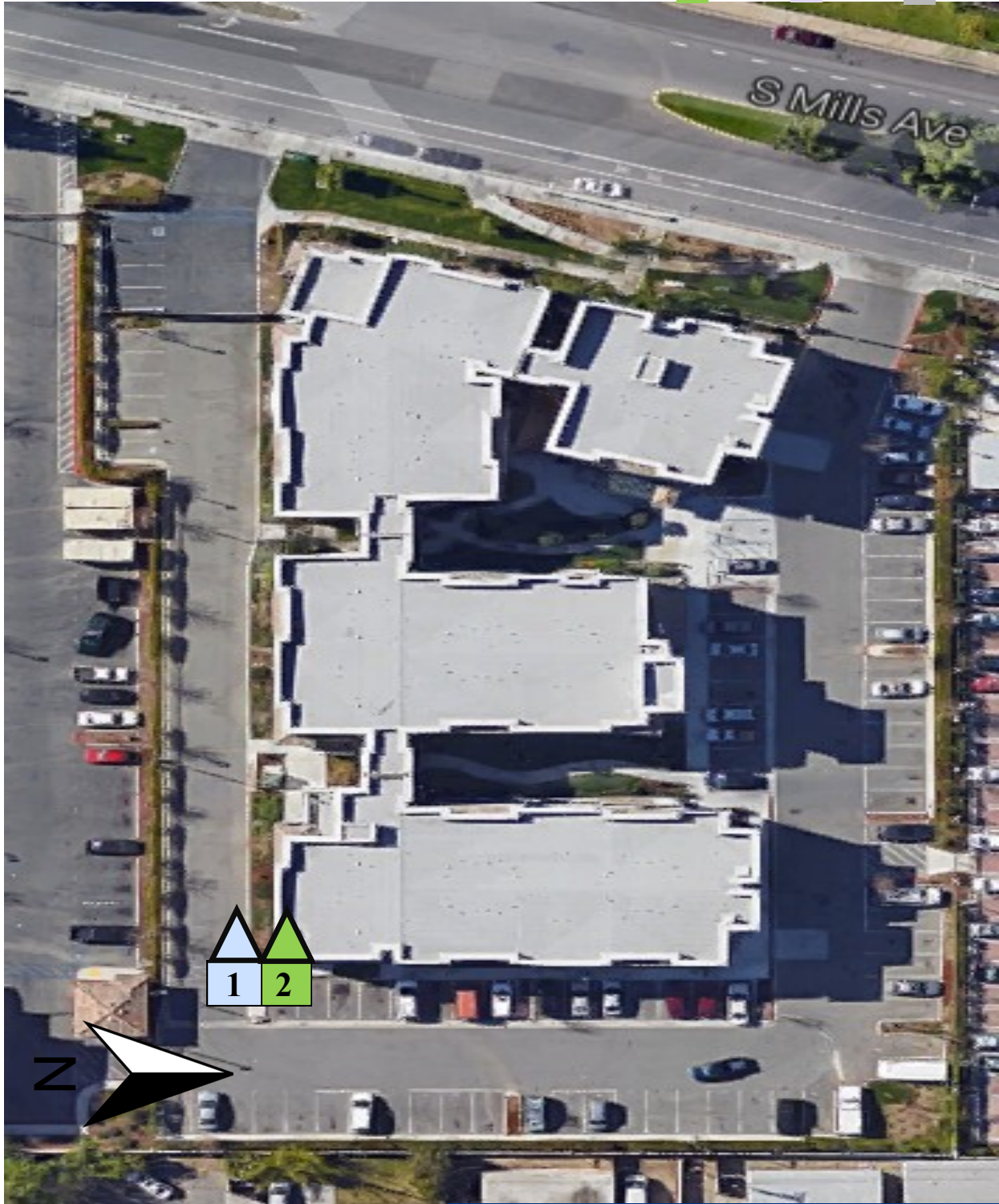
Domestic

Fire

Landscape

Reclaimed Water

Other



**SITE MAP**  
San Marino  
10355 Mills Ave  
Montclair CA 91763  
Prepared by Water Management  
Dated 09/21/2015



**Advanced Environmental Landscape**  
*Design & Consulting, LLC*

CSLB C-27 Lic#708716  
PO Box 8296, Alta Loma, CA 91737  
Phone: 909.980.8300 Fax: 909.941.6876  
[www.aelandscape.com](http://www.aelandscape.com)

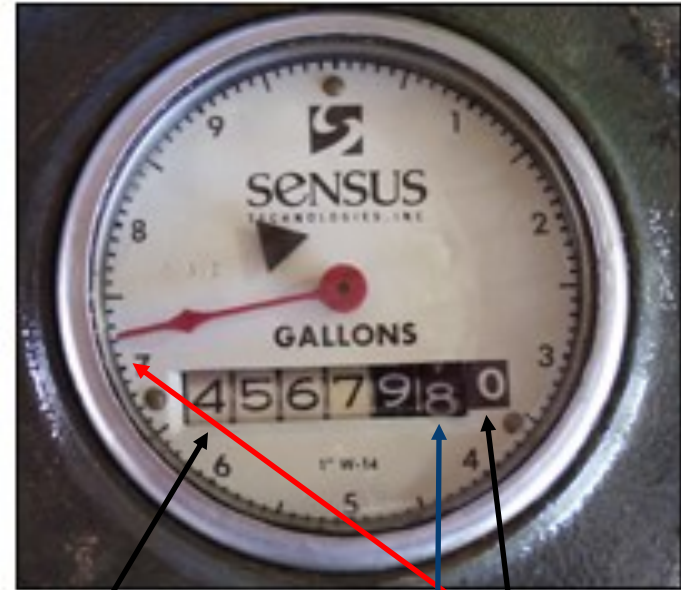
**NOTES:**  
WATER MANAGEMENT SITE MAP

# QUICK WATER METER- TUTORIAL



- Flow Indicator (red sweep hand)**  
Used when measuring low flow through the meter. The flow indicator measures in U.S. Gallons (0-9).
- Leak Detector (white triangle)**  
If no water is being used inside or outside, this indicator should not be moving. If it is rotating, you may have a leak.
- Place Holder**  
Indicated by [0]. The red sweep hand provides this information.
- Meter Register**  
Every turn of the first black number measures 100 gallons; the second, 10 gallons.  
Every turn of the last white number measures 1000 gallons.
- Meter Number**  
17359133

## How to Read Meter with Dial



4,567,970.7

Round this number down, this number will change once the dial makes a full turn

9,999,998.4

## How to Read Meter without Dial

